



Facultad  
de Filosofía  
y Letras

**WELCOME/BIENVENIDOS**



## ***Contact info***

**Vicedecana de Internacionalización y Movilidad**

**D<sup>a</sup> Cristina Gómez Castro**

Teléfono: 987 29 10 25

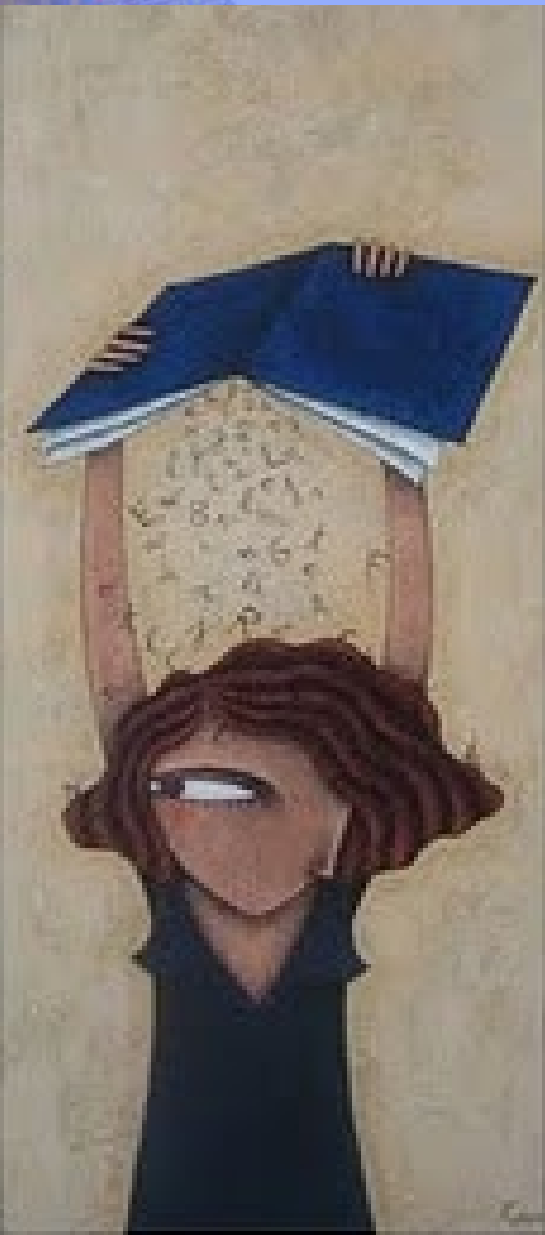
Email: [vdec.ffl.internacionales@unileon.es](mailto:vdec.ffl.internacionales@unileon.es)

**Becaria de colaboración**

**Carmen Vázquez Caballero**








E-mail: [cvazqc04@estudiantes.unileon.es](mailto:cvazqc04@estudiantes.unileon.es)

She will help you with the documents you have to sign in in order to register in our Faculty during these first days here.





## ***DEGREES OFFERED***

-  **GRADO EN FILOLOGÍA MODERNA: INGLÉS**
-  **GRADO EN LENGUA ESPAÑOLA Y SU LITERATURA**
-  **GRADO EN GEOGRAFÍA Y ORDENACIÓN DEL TERRITORIO**
-  **GRADO EN HISTORIA**
-  **GRADO EN HISTORIA DEL ARTE**
-  **DOBLE GRADO EN HISTORIA E HISTORIA DEL ARTE**
-  **GRADO EN INFORMACIÓN Y DOCUMENTACIÓN (Modalidad a distancia)**



## ***International coordinators***

<b>DEGREE</b>	<b>Coordinator</b>	<b>e-mail</b>	<b>Phone number</b>
Filología Moderna: Inglés	<b>Robert O’Dowd</b>	robert.odowd@unileon.es	987 29 10 87
Lengua Española y su Literatura	<b>Alejandro Junquera Martínez</b>	ajunquera@unileon.es	987 29 18 51
Geografía y Ordenación del Territorio	<b>Javier Santos González</b>	jsango@unileon.es	987 29 10 48
Historia	<b>Ana María Sixto Barcia</b>	asixb@unileon.es	987 29 37 5
Historia del Arte y Doble Grado	<b>Roberto Castrillo Soto</b>	r.castrillo@unileon.es	987 29 34 38
Información y Documentación	<b>Daniel Martínez Ávila</b>	dmarta@unileon.es	--



ACADEMIC CALENDAR YEAR 24-25:

[https://www.unileon.es/files/2024-](https://www.unileon.es/files/2024-06/calendario_escolar_grados_master_2024_2025.pdf)

[06/calendario\\_escolar\\_grados\\_master\\_2024\\_2025.pdf](https://www.unileon.es/files/2024-06/calendario_escolar_grados_master_2024_2025.pdf)

## ***ACADEMIC INFO***

First semester: Lessons start on the **10th of September** and finish on the 20th of December.

Evaluation period: 8 to 20 January 2025

Second semester: Lessons start on the **10<sup>th</sup> of February** and finish on the 29<sup>th</sup> of May

Evaluation period: 30<sup>th</sup> May until 14<sup>th</sup> June 2025

Faculty webpage: <https://filosofiayletras.unileon.es/>

Where to find information about your specific calendar and degree and also about the Schedule of exams for your subjects:

Specific calendars: <https://filosofiayletras.unileon.es/horarios-de-clase-y-calendario-de-examenes-curso-2023-2024/>

Official platform to follow the lessons: Moodle:

<https://agora.unileon.es/login/index.php>



# **ACADEMIC INFO**

## ***Specific info about the subjects: “Guía docente”***

This is the document that explains the contents that the subject covers and also the evaluation that will take place, so it is important.

The teachers will explain their main points the first day of class and you can have access to each one of them in the Moodle platform and you can also find it in the description of the study plan of your degree.

***Example of one of the teaching guides of the degree in Spanish language:***

[https://guiadocente.unileon.es/docencia/guia\\_docent/doc/asignatura.php?asignatura=0412006&any\\_academic=2024\\_25&idioma=cast&doc=N](https://guiadocente.unileon.es/docencia/guia_docent/doc/asignatura.php?asignatura=0412006&any_academic=2024_25&idioma=cast&doc=N)



# ***FOR YOUR REGISTRATION AT OUR FACULTY***

Contact person: **Carmen Vázquez**

Document to fill in for our Faculty:

[https://www.unileon.es/files/2022-09/solicitud\\_estudiantes\\_internacionales.pdf](https://www.unileon.es/files/2022-09/solicitud_estudiantes_internacionales.pdf)

Carmen will help you fill it in with your subjects and then it has to be signed by your specific coordinator in your degree.

# OTHER IMPORTANT ACTIVITIES

- CONFERENCES
- WORKSHOPS
- THEMATIC COURSES
- PLAYS
- DOCUMENTARIES
- EXHIBITIONS...





Thank you and  
have a nice  
stay with us!

