

Welcome to Unileon!

Getting to León

If you arrive to Madrid-Barajas, you'll have to catch the commuter train to Chamartín, and there you can catch a train to León. There is also a bus that goes to León directly from the airport.

Buy them here!

Bus
Train

Housing

You can live in a **student residency** or **rent a room in a shared apartment**. Residences are usually more expensive, while rooms can range from 150 to 350 euros per month. If you need help, more info is available [here](#)



Transport



- León is connected to other cities by either train or bus.
- To move through the town, there is a **system of buses**: check them out [here](#).
- Do you bike? You can **rent a bike through the public system** or **borrow one from the University**. Check it out [here](#) and [here](#).

Learning Spanish

- There is an option to take a free **2 weeks intensive Spanish course** before the semester starts.
- You can also take Spanish courses in the **University Language Center**. Check it out [here](#)!



Student email and ID

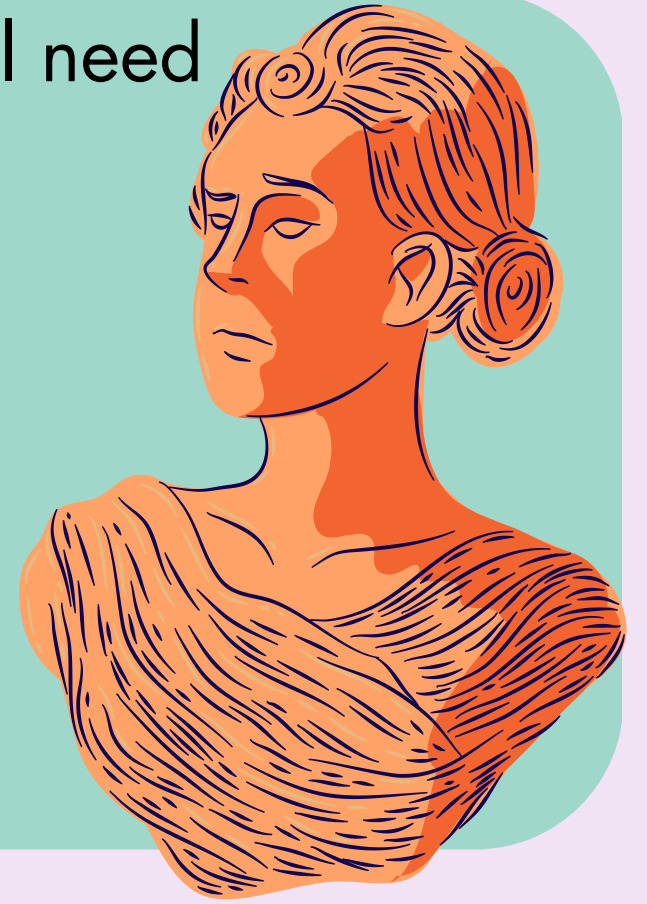


- You will receive a student email address. You will use it to access Moodle, Eduroam, communicate with your professors... This email ends in @estudiantes.unileon.es
- Once you've registered for your classes, you will receive a digital student ID. You have to request it [here](#).

Important information about Filosofía y Letras Degrees

These are the degrees offered in the Faculty and their codes. you will need them for searching for courses when registering here:

- **History:** 0410.
- **Art History:** 0411
- **Spanish Language and Literature:** 0412
- **Modern Philology, English:** 0413
- **Geography:** 0416
- **Information & documentation (online):** 0417



Coordinators

Each degree has an **Erasmus coordinator**. Below, you can find their contact information:

- **History:** Ana María Sixto Barcia, asixb@unileon.es
- **Art History:** Roberto Castrillo Soto, rcass@unileon.es
- **Spanish Language and Literature:** Alejandro Junquera Martínez, ajunm@unileon.es
- **Modern Philology, English:** Robert O'Dowd raodo@unileon.es
- **Geography:** Alejandro Gómez Pazo agomp@unileon.es
- **Information & documentation (online):** Daniel Martínez Ávila, dmarta@unileon.es



Language

Most of the courses are **taught in Spanish**.

However, some courses are taught in English. **These are called English courses.**

Other courses aren't taught in English, but the professors provide materials and bibliography in this language for Erasmus and exchange students. These are called **English friendly courses**.

You can consult the courses → [here](#)

Contact information

If you have any doubts or issues, you can contact the **Vicedecana de Internacionalización y movilidad**, Cristina Gómez Castro → vdec.ffl.internacionales@unileon.es. You can also contact the collaborator of International Relations

How to sign up for your classes

Before registration

- Have your **learning agreement** (LA) signed by BOTH your host and home university coordinators.
- If you want to add changes to your LA, you need to add those changes and **have it signed again by your host and home university coordinators.**



The registration form

- Come to the Secretaría of our faculty and get the **Registration form.**
- Fill it in with your personal data, in **CAPITAL LETTERS.**
- Under the column **Nombre Completo de la Asignatura**, write down each of the **COURSES** you are going to take.
- Under the column **Titulación** write the **name of the degree** the subject belongs to.
- Under the column **Código de asignatura** you need to find the **code of the subject**. It should be on your LA. You can also find them online → start **here**: click on the name of the degree > *información académica* > *plan de estudios* > name of the course.
- Once you've filled out the registration form, it will be signed by the **COORDINADOR DE TITULACIÓN** (coordinator of the degree).
- After these steps have been followed, you will be signed up, and you will be able to get your student ID and access all of the Google services.



Important!

If you sign up for a course, and you want /need to change it later in the semester, **you need to change your Learning Agreement first.** You need the approval of BOTH your home and host University.



Further information

Library

With your student ID, you can **access and borrow books from all libraries on campus.**

The opening hours of the library in Filosofía y Letras are: **Monday to Friday, from 8 am to 19:45 pm.**

You can find more information about the library → [here](#).

You can consult the general library catalogue → [here](#)



Calendar and timetable



You can consult the **school calendar** → [here](#).

In order to know when to attend class, you can consult the **timetable** → [here](#).

In the webpage of Filosofía y letras, you can also find information about the date, time and place of your **exams** → [here](#)

Where to eat

There is a **cafeteria / canteen** on campus. It is located right by Filosofía y Letras.

With your student ID, you have the right to a 3 course meal for an affordable price. The cafeteria also offers sandwiches, hamburguers, etc; at an economic price.

If you decide to bring your own lunch, in Filosofía y Letras there is a lunch room with two microwaves.



Cultural activities and sports



The University organizes different cultural activities, such as screenings of movies, concerts, or theater plays. You can consult the programming → [here](#).

In Filosofía y Letras there are also cultural events, such as artistic exhibitions, performances, or concerts on the weekends.

There is a set of sports you can sign up for on campus. Consult them → [here](#)

We wish you a nice stay!

If you have anymore questions, you can consult the webpage of Filosofía y Letras → [here](#).
You can also take a look at the incoming student section in the Unileon webpage → [here](#)

